



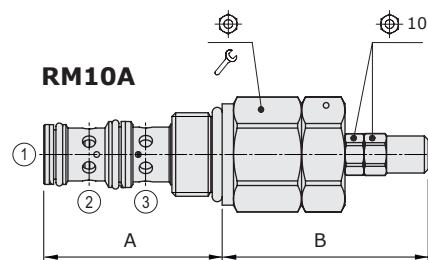
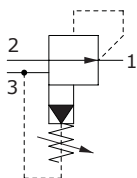
RM..A type pressure reducing valves - 3 way

- Pilot operated
- Without relieving
- Spool type
- From SAE10 to SAE16 cavities

Technical specifications and diagrams are measured with mineral oil of 46 cSt viscosity at 40°C (104°F) temperature.

	RM10A	RM12A	RM16A
Nominal flow	50 l/min (13 US gpm)	100 l/min (26 US gpm)	150 l/min (40 US gpm)
Max. pressure	350 bar (5100 psi)		
Oil leakage	-		
Fluid	mineral based oil		
Viscosity	10-200 cSt		
Max level of contamination	20/18/14 ISO4406		
Fluid temperature	with NBR seals with FPM seals	from -20°C (-4°F) to 80°C (176°F) from -20°C (-4°F) to 100°C (212°F)	
Environmental temp. for working conditions	from -20°C (-4°F) to 50°C (122°F)		
Cavity	SAE 10/3	SAE 12/3	SAE 16/3
Weight	0.210 kg (0.46 lb)	0.340 kg (0.75 lb)	0.470 kg (1.04 lb)

NOTE - For different conditions, please contact Walvoil Sales Dpt.

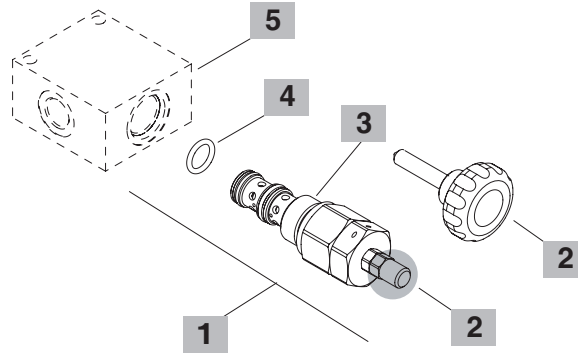
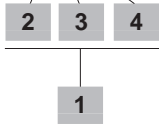


Valve type	A		B		⌀	Wrench
	mm	in	mm	in		
RM10A/1S	47.2	1.86	54.5	2.15	27	50 37
RM12A/0S	73.5	2.89	51.5	2.03	32	70 52
RM16A/0S	75	2.95	50.5	1.99	41	100 74

For dimensions with different type of adjustment see page 212

Ordering codes and description composition

RM10A/1S1B



1 Cartridges

TYPE	CODE	DESCRIPTION
SAE cavity 10/3		
RM10A/1S1B	ORM10002012	Pressure range 1
RM10A/1S2B	ORM10002013	Pressure range 2
RM10A/1S3B	ORM10002014	Pressure range 3
SAE cavity 12/3		
RM12A/0S1B	ORM12002008	Pressure range 1
RM12A/0S2B	ORM12002000	Pressure range 2
RM12A/0S3B	ORM12002016	Pressure range 3
SAE cavity 16/3		
RM16A/0S1B	ORM16002008	Pressure range 1
RM16A/0S2B	ORM16002000	Pressure range 2
RM16A/0S3B	ORM16002009	Pressure range 3

3 Adjustments

TYPE	DESCRIPTION
S	Screw with cap
V	With handwheel

3 Pressure range

Standard setting is referred to at 5 l/min (1.32 US gpm) flow

TYPE	DESCRIPTION
1	Pressure range 5÷80 bar (72.5÷1160 psi); Std. setting 50 bar (725 psi)
2	Pressure range 50÷220 bar (725÷3190 psi); Std. setting 150 bar (2175 psi)
3	For SAE cavity 10/3: pressure range 100÷350 bar (1450÷5075 psi); Std. setting 250 bar (3625 psi) For SAE cavity 12/3 and 16/3: pressure range 180÷350 bar (2610÷5075 psi); Std. setting 250 bar (3625 psi)

4 Seals

TYPE	DESCRIPTION
B	NBR (Buna) o-ring seals, std configuration
V	FPM (Viton) o-ring seals, contact Sales Dept.

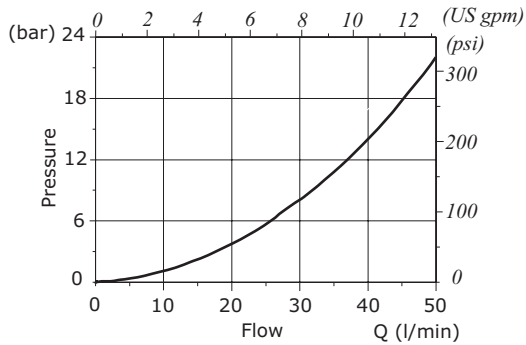
5 Valve body

TYPE	CODE	DESCRIPTION
SAE 10/3-G 3/8	3CC1030C11	Aluminium body for cavity 10 valve, G 3/8 std thread
SAE 12/3-G 1/2	3CC1230D11	Aluminium body for cavity 12 valve, G 1/2 std thread
SAE 16/3-G 3/4	3CC1630E11	Aluminium body for cavity 16 valve, G 3/4 std thread

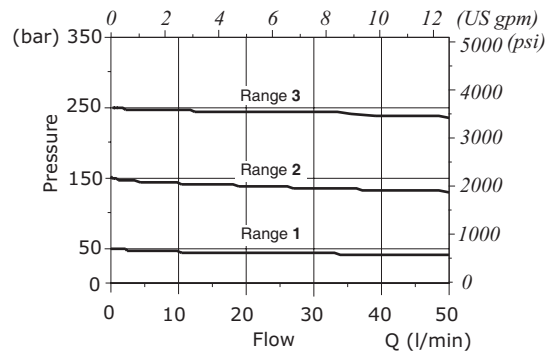
Note: aluminium body can stand up to 210 bar (3050 psi)
For steel bodies or different threading see from page 217

Rating diagrams

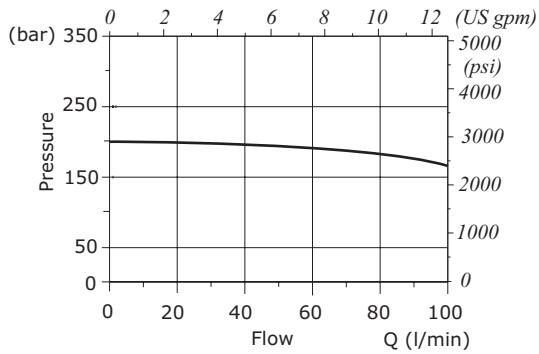
RM10A pressure drop vs. flow 2->1



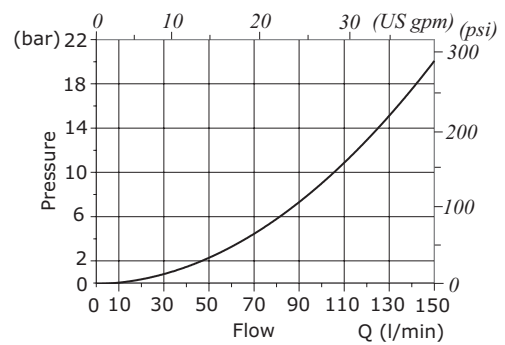
RM10A pressure reducing vs. flow 2->1



RM12A pressure reducing vs. flow 2->1



RM16A pressure drop vs. flow 2->1



RM16A pressure reducing vs. flow 2->1

